

Brushwork

Issue 266 November - December 2023

YNEXT

NEXT GENERATION OF PERFORMANCE BRUSH FILAMENT

YNEXT is an innovative composition of Polyamid and Polyester with stunning flexibility, strong bend recovery & high resilience in heavy-duty applications.

YNEXT stands for superior painting experience ensuring high pic-up and uniform paintflow with excellent surface finish.

YNEXT fills long-lasting paintbrushes for professionals

CONTACT

YONGLI FILAMENT&BRISTLES

www.ylfilament.com

contact@ylfilament.com

EUROPEAN DISTRIBUTION

Rothlaender &Co.

www.rothlaender.com

contact@rothlaender.com



Countdown is on for the World Brush Expo
the must-attend event for brushware
professionals in 2024.

Speaking with a Sales rep, found an Ally. **Welcome.**

Borghì Spa provides you with the best machine solutions for the broom and brush industry. Flexibility and Versatility, combined with Quality and Reliability at your disposal since more than 75 years. Eager to live an unforgettable experience?

**Borghì Spa is waiting for you at World Brush Expo,
May 22/24, 2024 - Bologna, Italy**

BORGHI.COM

Brushwork is published six times a year including the World Brushwork Catalogue for an annual subscription of £150.00 (\$190.00, Euro 180).

Airstream Communications Ltd.
Registered Office
49 Station Road,
Polegate,
East Sussex,
BN26 6EA,
England

Editorial and advertising enquiries to:
Editor
Brian Hall

brianhallx@btinternet.com
+1 250 826 0495

Editor
Brian Hall

brianhallx@btinternet.com

North American Office
46455 Uplands Road,
Chilliwack, B.C.
V2R 4W1
Canada
Phone: +1 250 826 0495
PLEASE NOTE NEW ADDRESS

Design and Artwork by
Airstream Communications Ltd.
Printing by Gemini Press

Unsolicited material is accepted on the understanding that Airstream Communications Ltd. is not liable for its safekeeping. Although every effort is made to ensure that companies included in this magazine are reputable, Airstream can give no guarantees in this regard and readers must deal with them at their own risk.

Entire contents copyright ©Airstream Communications Ltd 2023.

All rights reserved.

Reproduction in any form without written consent is strictly prohibited.



AIRSTREAM COMMUNICATIONS

**Anne and Brian
and not forgetting Maggie (our dog)
would like to wish you
A Happy Christmas, Seasons Greetings and
Happy Holidays.
Froehliche Weihnachten,
Buon Natale, Feliz Navidad, Joyeux Noel!**



Contents: Issue 266 November - December 2023

Brushmaking needs Machines	4	FASS Innovations	22
The toothbrush industry	6	Mr Wang Haiou of Yongli	26
PMM gets it done	8	Celanese Quality	28
Perlon® linnovation	10	David Bian of CIBRUSH	33
Tailor-Made products from Perlon®	12	Lessmann celebrates its 75th anniversary	34
Charles E Green	14	Alessandro Acquaderni WBE	35
NM and AEOLA machines from		Brushwork Catalogue entry	36
Boucherie:	18	Worldwide Directory	40

No Modern Brushes without Machines



Machines play a crucial role in the production of brushes, offering numerous advantages that contribute to their overall importance. With automation and precision, machines have transformed the brush manufacturing industry, enhancing both productivity and quality.

One significant advantage of using machines in brush making is the consistency they provide. Machines can be programmed to repeat the same motions accurately and precisely, resulting in brushes that are uniform in shape, density, and bristle arrangement. This consistency is crucial, especially for industries that require brushes with specific characteristics, such as painting, cleaning, or personal grooming.

Efficiency is another key aspect that machines bring to brush manufacturing. Compared to manual labor, machines can produce a significantly higher number of brushes within a shorter time frame. This increased productivity not only reduces manufacturing costs but also ensures a steady supply of brushes to meet market demand. Additionally, machines can operate continuously, minimizing downtime and achieving economies of scale.

Moreover, machines offer flexibility and customization in brush production. With the ability to program and adjust various parameters, manufacturers can create brushes tailored to specific applications or customer preferences. Machines allow for easy integration of different materials, handle types, sizes, and bristle compositions, opening up a wide range of possibilities for brush design.

Quality control is another crucial aspect that machines bring to brush manufacturing. By automating production processes, machines can consistently monitor various factors to ensure that brushes meet the desired quality standards. For instance, machines can detect and correct flaws like bristle irregularities, improper bristle trimming, or handle misalignment during production. This attention to detail helps maintain high-quality brushes and reduces the likelihood of defects reaching consumers.

Lastly, machines ensure worker safety in the brush manufacturing industry. By automating repetitive or

hazardous tasks, workers are less exposed to risks such as repetitive strain injuries or exposure to harmful materials. This promotes a safer working environment and improves overall employee well-being.

In conclusion, machines have revolutionized the brush manufacturing industry, bringing consistency, efficiency, flexibility, quality control, and improved worker safety. Thanks to their contributions, the production of brushes has become more streamlined, cost-effective, and capable of meeting diverse customer needs. As technology continues to advance, machines will play an even more critical role in enhancing brush manufacturing processes.

Intellectual Property

The era of copying Western Brush Making machines in China is coming to an end due to several reasons. Firstly, China has made significant progress in technological advancements and innovation over the years. As a result, Chinese companies are now capable of developing their own cutting-edge machinery and manufacturing equipment.

Additionally, intellectual property rights and enforcement have become a priority in China. The Chinese government has been taking steps to strengthen intellectual property protections and crack down on infringement. This shift has created a more favorable environment for foreign companies to invest in China, as they feel more confident in protecting their technology and machinery from being copied.

Furthermore, the global economic landscape has changed. China has transitioned from being a manufacturing hub to becoming a major player in research and development. Chinese companies are now focused on developing their own proprietary technologies and creating value-added products, rather than solely relying on copying and imitating Western machinery.

Overall, the transition away from copying Western Brush Making machines in China represents a shift towards innovation, intellectual property protection, and sustainable development in the country's manufacturing industry.

the World of **STRIP BRUSH** MACHINES



Discover all worlds of brush machines!

WÖHLER

the World of Brushmaking Machines

 bt.woehler.com

The toothbrush industry is an important sector of the oral care market,



The toothbrush industry is an important sector of the oral care market, dedicated to manufacturing and providing essential tools for oral hygiene. Toothbrushes are an integral part of everyone's daily routine, and their importance cannot be overstated. Let's explore some key aspects of the toothbrush industry.

Firstly, oral health is paramount, and toothbrushes play a vital role in maintaining it. The toothbrush industry caters to the needs of individuals worldwide, offering a wide variety of toothbrushes designed to meet different preferences and requirements. From manual toothbrushes with various bristle options to electric toothbrushes with advanced features, the industry strives to provide effective tools for cleaning teeth and gums, promoting dental health and preventing oral diseases.

Moreover, the toothbrush industry encompasses ongoing research and innovation. Manufacturers invest in developing new technologies, materials, and design approaches to enhance the efficacy and user experience of toothbrushes. Electric toothbrushes with oscillating or sonic movements, integrated timers, pressure sensors, and even smart features have become increasingly popular, driven by consumer demand and advancements in oral care technology.

The toothbrush industry is also committed to sustainability. Over the years, there has been a growing emphasis on eco-friendly practices and materials. Many manufacturers now offer toothbrushes made from biodegradable or recyclable materials like bamboo, cornstarch-based plastics, or even recycled plastics. Additionally, toothbrush companies often implement packaging initiatives to reduce waste and promote eco-conscious consumption.

Distribution and accessibility are significant aspects of the toothbrush industry as well. Toothbrushes are available in a

wide range of retail outlets, from pharmacies and supermarkets to online marketplaces. This widespread availability ensures that toothbrushes are easily accessible to people of all backgrounds, promoting oral hygiene on a global scale. Furthermore, organizations and dental health initiatives often distribute toothbrushes to underprivileged communities or during disaster relief efforts to address oral health disparities.

The toothbrush industry also promotes oral health education. Many manufacturers collaborate with dental professionals and organizations to raise awareness about proper oral hygiene practices. These initiatives include educational campaigns, programs in schools and communities, and collaborations with dental clinics to ensure people have access to accurate information and guidance on oral health maintenance.

Lastly, the toothbrush industry continuously undergoes regulations and quality control measures to ensure consumer safety. Governments and industry organizations set standards regarding materials used, manufacturing processes, and marketing claims to protect consumers from potentially harmful products and misleading information. These regulations aim to maintain consistent quality, safety, and efficacy across the toothbrush market.

In summary, the toothbrush industry plays a significant role in promoting oral health through manufacturing innovative toothbrushes, investing in research and development, focusing on sustainability, ensuring accessibility, supporting oral health education, and adhering to regulatory standards. These collective efforts contribute to maintaining good oral hygiene practices and improving the overall dental health and well-being of individuals worldwide.



**TAIHING
NYLON**
— SINCE 1985 —



BI♻️FIL FILAMENT

FOR DISPOSABLE TOOTHBRUSH

- 💡 Better Tensile Strength;
- 💡 Strong Cleaning Ability;
- 💡 Biodegradable to carbon dioxide and water.
- 💡 Ideal for hotel and airline industries.



Telephone: + 86 750 3777 088

Email: marketing@taihingnylon.com

Website: www.taihingnylon.com

Get it Done with PMM!



PMM was founded in 1976. In an ever-changing industry, we are a private, independent, and solid company: more than 40 years of experience backs up the transformative attitude of the team of young professionals collaborating with us.

Our passion for engineering creates knowledge for the benefit of our clients.

PMM's solid financial structure has been crucial to maintain our independence and strengthening our bonds with critical suppliers and other business associates.

As a consequence, PMM has developed a solid reputation worldwide. In a world that becomes more

standardized by the minute, the big difference lies in the small details.

At PMM, all our experience, technology, and service are geared towards these details. We are exclusively dedicated to the manufacturing of engineered synthetic filaments for toothbrushes, cosmetic brushes, and industrial application brushes. At



PMM engineering implies vocation, tradition, and passion. We look closely at what we do with the wisdom of experience and the transformative vision of a new generation, eager to innovate. Think and make, make and innovate.

MILLIKEN MACHINES

FAST, ACCURATE, RELIABLE.
THREE MODELS AVAILABLE



MADE IN THE USA SINCE 1910
WWW.CHARLESEGREEN.COM



CHARLES
E.
GREEN



QUALITY SINCE 1876



Paint Brush Ferrules, Brush Pins,
Wood Handles, Plastic Handles,
Milliken Machines, Metal Stamp, Wire Forming

MADE IN THE USA SINCE 1876
WWW.CHARLESEGREEN.COM

PMM
Makes sense

Quality,
Service,
Knowledge,
It makes sense!



PHONE

+5255.5558.6502*

FAX

+5255.5558.4483*

*FROM THE USA DIAL FIRST 011

E-MAIL

PMM@PMM-MEX.COM

VISIT US AT

WWW.PMMBRIGHTLINE.COM

Perlon® setting the pace for innovation



A key mission of PEDEX GmbH, part of the Perlon® group, is to continue to provide our customers with innovative filaments for dental care and cosmetic applications.

Perlon® was one of the first companies to develop polyamide based filaments derived from natural resources, such as the Castor Bean, to address the growing market need for sustainable products.

These filaments are marketed under the trademark Medex® S Greenline. Base polymers for these filaments are PA 10.10 and PA 11 – which are 100% Biobased – and PA 4.10. All formulations are FDA compliant and can therefore be used for dental or personal care filaments.

With Dentex® S SL – a Post Consumer Recycled PBT - we produce and market a PBT filament originating from chemically recycled PET water bottles, underlining Perlon®'s sustainability approach. Dentex® S SL is also FDA compliant.

Rounding off our range are our Greenline filaments based on “mass balanced” sustainable polymers such as PA 12 or PBT.

We also decided to extend the sustainability concept to other functional filaments in our well-known innovative range.

Filament classics from Perlon® like Spiral filaments, Whitening filaments, Trilobal filaments and Texturized Filaments are now available using sustainable Medex® S Greenline polymer technology.

Our Antibacterial filaments based on PA 612 or PBT provide exceptional protection against bacterial growth on the filament surface.

All filaments can be used for both electrical and manual toothbrushes and are available in a wide colour range and

can be processed by traditional stapling as well as advanced anchorless- or fusion processes.

For the cosmetic market, Perlon® offers a wide range of special filaments for decorative cosmetic applications – such as mascara brushes, nail polish brushes and applicators.

In addition to this, ultrafine filaments down to 2-mil diameter can be manufactured for the production of facial- and body brushes.

For special applications, Perlon® offers a variety of filaments based on raw materials with different properties – depending on the requirement of its customers.

In addition to the use of Polyamide 6.12, PBT, Polyamide 6.10 and TPEE, Perlon® has developed a range of ecofriendly materials, incorporating a variety of sustainable PA 10.10, PA 4.10 and PA 11 based filaments.

Different shapes, for example trilobal, square and rectangular can be produced as mono- or multiple component filaments. Stain Devil – the three-component filament – is a perfect example of Perlon®'s R&D caliber.

The use of fillers, active ingredients and foaming agents, which have an impact on the properties of the finished product, give consumers the opportunity to choose between a high volume or easy release mascara brush.

Last but not least, we have recently enlarged our geographical presence in the dental care filament market with a new production base in Goa/ India.

Perlon® is a part of Serafin Group, whose philosophy is based on more than 150 years of entrepreneurial tradition of its shareholding family. Serafin invests into companies with the aim to foster their long term development in accordance with all stakeholders.

Is your message hidden in plain sight?
Is your message hidden in plain sight?
Is your message hidden in plain sight?

PRINT MEDIA is TRUSTED

Print is credible.
Print media comes with legitimacy.
Print publications are still the most desirable avenues.

Brushwork magazine has spent decades building a reputation, and if readers trust a publication, they'll pass that trust onto the marketing messages within it.

Contact Brian Hall for information on how to make the best marketing impact for your products :
email brianhallx@btinternet.com or phone +1 250 826 0495



Your Performance
- Made by **Roth**



Your partner for high quality machinery

- > High level automation
- > Low maintenance, longevity and durability
- > Customized machine concepts with innovative solutions

NEW
Highspeed machine concept

Increased performance level of new **BFK2/E5 - WTR**



Roth Composite Machinery GmbH
Plant Burgwald • Forststr. 3 • 35099 Burgwald • Germany • Phone +49 (0)6451/71918-0
www.roth-composite-machinery.com • info@roth-composite-machinery.com

Visit us at www.brushworkmagazine.com

Brushwork 11

Tailor-Made and Standard Stock Filaments for the Technical Brush Industry from Perlon®

There are a multitude of end applications for which brushes are used in Industry. They can be used for example to clean streets, wash cars or polish floors, but can also be used as guards, screens and tools in areas where one would not expect brushes to be used at all. This sector of the brush industry requires an enormous diversity of component parts and raw materials, made to exacting specifications to fit the end purpose.

Perlon® filaments used in the technical brush industry are manufactured in Germany, the USA and in the future in the group's newest location in India. The Perlon® product range remains the world's largest range of standard items available from stock. This range covers all the main polymer groups required for use in exacting technical applications – Abrasive Filaments in PA6, 6.10, 6.12 and AbraMaXX®, Polyamide 6, 6.6, 6.10, 6.12, 12, Polyester PBT, Polyethylene (PE) as well as Polypropylene (PP). These products are supplied in a range of diameters (0,075mm/3 mils to 3,00mm/118 mils) and grit sizes (24 to 2000) for Abrasive Filaments.

In addition to standard polymers, Perlon® also stocks selected products in high performance polymers for applications requiring increased heat resistance, flame retardancy or electrostatic properties. The standard offering is rounded off with a range of multifilament products used for the manufacture of roller brushes for steel applications.

Abrafil®, Abralon®, Hahlbrasif® and AbraMaXX® abrasive filaments are used in a variety of applications requiring an abrasive action. Brushes are manufactured as tools, generally mounted on machinery for both heavy duty work (eg. Deburring and surface treatment of steel) and more delicate applications (eg. treatment of textiles and fabrics and jewellery polishing). Grit types used include Silicon Carbide (SiC) for an aggressive action to Aluminium Oxide (AO) for lighter work. Perlon® also invented the use of ceramic grit filaments (KK) and is a leading supplier of diamond grit (DM) filaments for the marble and stone industry as well as for specialist areas. AbraMaXX® offers higher levels of abrasion, better precision, shorter tact time and is non smearing.

Abrasive filaments can be treated with Bilon® additive to increase the lifetime of the filament in high alkali



solutions, or supplied coated to reduce wear and tear on brush making machinery. Perlon®'s range of abrasive filaments covers over 50 different products readily available from stock. Technical advice for specific applications is available on request.

The parameters to be met for the technical brush application will determine what type of filament would be best suited to the job. Working temperature, moisture absorption, chemical resistance and abrasion performance are some of the main factors to consider. Perlon®'s large product range consists of polymers that will suit the vast majority of specifications for the technical brush industry and technical support is readily available.

Perlon® is focussed on the needs and demands of its customers and in addition to their large range of standard stock items, makes tailor-made products specific to customer needs. These include special colours, lubrication, crimps and shapes as well as spooled material for the latest machinery.

Whilst the majority of customers are served on a direct basis from manufacturing sites in Europe and the USA, Perlon® works closely with an extensive network of agents and distributors across the globe to guarantee the best possible communication, delivery and response times for its customers. Perlon® is ISO 9001:2000 registered at all sites and all products are manufactured to exacting specifications using own-engineered extrusion technology.

Perlon® has committed to a sustainable future by addressing its environmental, social and economic drivers and has set a target to reduce the total CO₂ emissions of its products by 15% by 2030. Recycling is a top priority at Perlon®, which has operated its own recycling facility for over 25 years. GreenLine, Perlon®'s range of sustainable filaments incorporates products made from recycled polymer (R), bio-based (BB) polymer as well as a low carbon (LC) range.

Perlon® is a part of Serafin Group, whose philosophy is based on more than 150 years of entrepreneurial tradition of its shareholding family. Serafin invests into companies with the aim to foster their long term development in accordance with all stakeholders.



The fiber of our being



MOISSONNIER, the quality process.

*Mixing, Tipping, Flogging, Sanding, Cutting
Animals, Vegetal & Synthetic fibers*

Tel : 00 33 (0)3 86 554 554 - Fax : 00 33 (0)3 86 554 555
welcome@moissonnier.fr - www.moissonnier.fr

**BEST QUALITY,
PRODUCT INNOVATION and
TECHNICAL PROGRESS**

IPCplast
www.ipcplast.cz

**PAINT ROLLERS
ACCESSORIES**

**IPC PLAST spol. s r.o. | Patockého 763 | Brno 602 00 | CZECH REPUBLIC
tel. +420 588 420 08 | www.ipcplast.cz**

WÖHLER



*Merry Christmas
and happy holidays*

As you celebrate with your family,
we are sending you warm wishes.

woehlerbrushtech.com

Charles E. Green & Son

THE BRUSH INDUSTRY'S SUPPLIER SINCE 1876

Since 1876 the Green family and employees have designed and manufactured parts, products and machines for the brush industry.

It became apparent twenty years ago to Charles E. Green & Son officials that soon there will be only quality and/or niche market manufacturers. To this end the Company has been expanding its product lines and services.

Charles E. Green & Son is currently under the presidency of 5th generation family member John Vanderbilt Green III. He works alongside with his 6th generation daughters, who happen to be the first generation of women to run Green. They are company Vice Presidents Rebecca Green Sullivan and Caitlin Green.

Charles Green has grown, and will continue, to grow as a company. The Company attributes its continued success to being able to change with the times and with its customers' needs. Green has

always met the past, present and future needs of brush makers and will continue to do so for the next 140 years.

In 2010 Charles E. Green & Son purchased MillikennMachines

Milliken has been building nailing machines since 1910. Originally Milliken started out in the crate assembly business, specializing in machines that nail the wooden boxes together. During this time all goods were transported by wooden crates in comparison to the cardboard boxes we use today.

The 1920s was when Milliken designed and sold their first paint brush nailing model. Our machines have always been simple, sturdily built, workhorses. In some factories, there are machines from the 1940s still in operation!

Today the Company offer three models. Model G, Model J-4 and Model J-6. The G is our simplest, base model and inserts up to two

pins. The J Models are heavier duty and were designed in response to the rise of Stainless Steel ferrules. Our J-4 is built with a heavy duty welded construction frame and is available with one to four tracks. For the customer who wants heavy duty construction and speed, the J-6 Model is built with the same welded steel frame but inserts up to six nails at once, three from the top and three from underneath simultaneously.

For more information , please contact:

Caitlin Green

973-485-3630

info@millikennmachine.com

www.millikennmachine.com

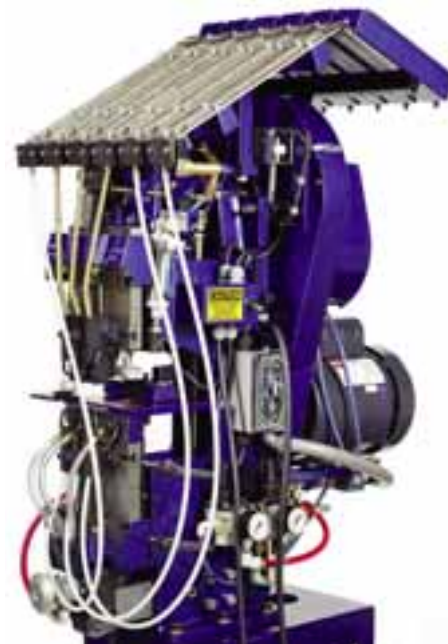
www.charlesgreen.com



Model G



Model J-4



Model J-6



**Horsetail- and
Goathair -
brought to you by
DKSH Switzerland Ltd.**

Please contact us for further information,
specifications and offers:

Reinhold Hoerz

Senior Sales Manager, Brush Industry

Phone +41 44 386 7901

Mobile +41 79 785 4657

reinhold.hoerz@dksh.com

www.dksh.ch/brush

Think Asia. Think DKSH.

The term "INDUSTRIAL AUTOMATION" has many definitions, such as "technological and information systems designed to manage material, processes and information flows for the purpose of simplification, optimization, and savings". For us, it means making our vast know-how available to our Italian and international shareholders in order to achieve ever higher goals.



INNOVATION AT YOUR SERVICE

BIZZOTTO GIOVANNI AUTOMATION S.r.l.

Via M. Buonarroti, 67
35010 PAVIOLA DI SAN GIORGIO IN BOSCO (PD) - ITALY

Tel: +39 049 9451067
Fax: +39 049 9451068

Contact: Marco Bizzotto, General Manager

Handle Machinery Sector:

Sanders, chucking machinery (i.e. doming, tapering, tenoning, threading, end boring, cross boring, etc.), painting machinery (lacquering), labeling systems and packing machinery for the production of wooden handles. Complete machinery lines for the production of metal handles, starting from the flat steel or aluminum band coil and including painting lines, machines for assembling various plastic inserts (hanger tips, thread inserts, mop inserts, tapered inserts, etc.), boring, deforming and cutting equipment, as well as labeling systems and machines for packaging with the use of different systems even robotized.

Woodworking Machinery Sector:

Profiling and shaping machines, boring and tapping machines, sanders for the production of broom and brush blocks, paintbrush handles and similar items.

Industrial Automation Sector:

Customized machinery for the preparation, positioning and assembly of particular products and accessories for the cleaning industry (mops, floor scrubbers, detergent dispensers, velvet lint brushes and adhesive lint brushes for clothes cleaning, etc.), oral hygiene industry (toothbrushes, accessories, etc.), automotive industry and kitchen appliance industry.

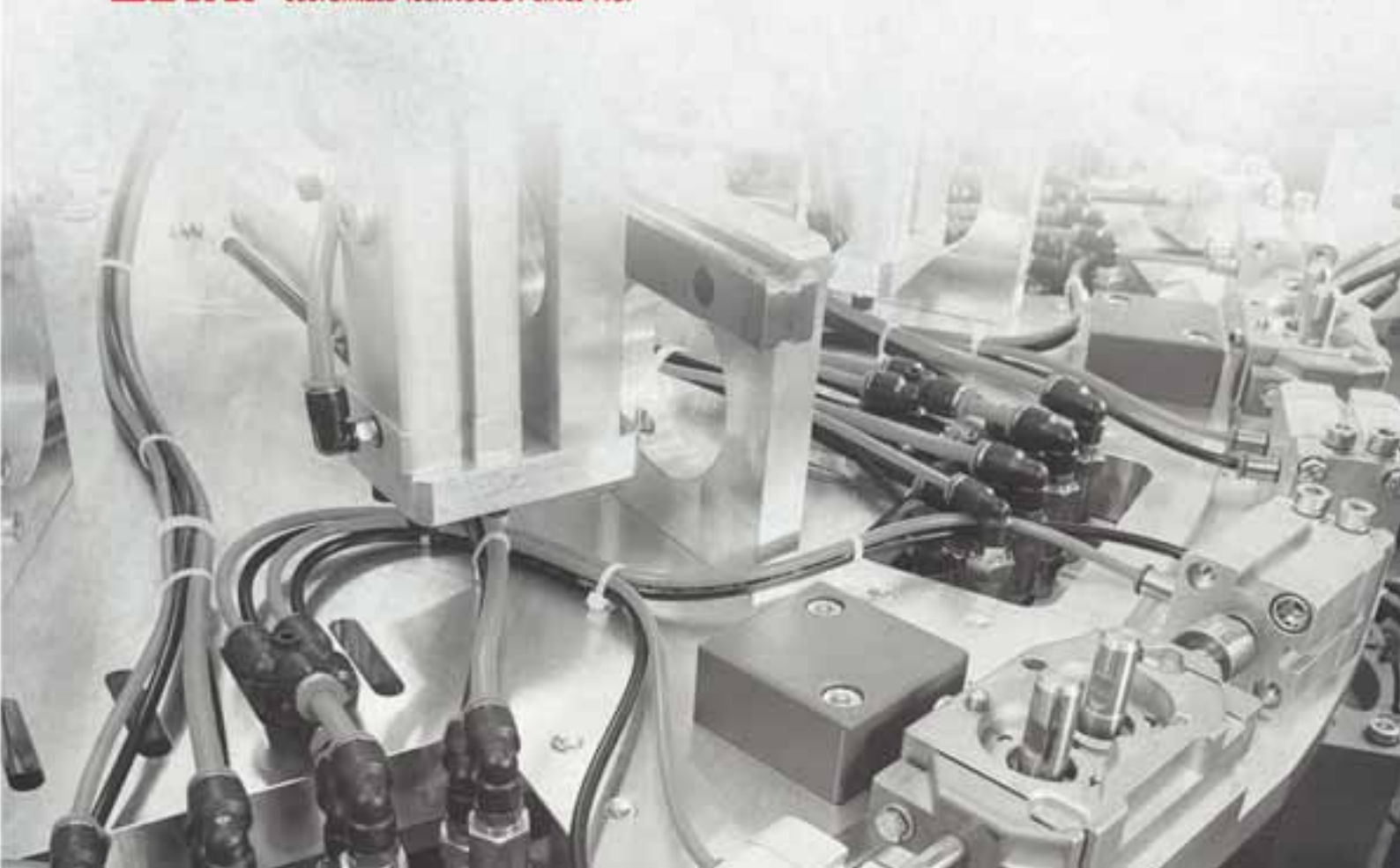
Company Philosophy:

Your Automation, Our Mission

Understanding customers specific needs and providing state-of-the-art solutions.



**BIZZOTTO
GIOVANNI**
AUTOMATION
CUSTOMIZED TECHNOLOGY SINCE 1957



NM and AEOLA machines from Boucherie: a different approach to modern brush making.

NM : just one filling tool with the output of two.

With the NM machine, Boucherie has taken a totally different approach to manually loaded flexible drill and fill machines. As opposed to traditional “vertical” machines, the NM is laid-out as a compact carousel, so that the operator’s hands stay well away from the moving drill and filling tool, making this machine much safer. As a surplus, the one triple-colour fibrebox is horizontal, and at a very convenient loading height that does not require leaning over the machine to refill, which is both safe as well as ergonomic.

This extremely fast running single tool machine is more compact, will run at a higher efficiency and will be much simpler to maintain than machines available to this date. With just 3 clamping stations, tooling is easy to make and change-over is very quick. Because of its reduced size and its well-thought-through configuration, accessibility for maintenance is excellent.

Just like the even more sophisticated Aeola machine, this machine uses Boucherie’s most innovative technology, which allows the combination of a very high tufting speed with just one filling tool that doesn’t stop between consecutive brushes.

The filling tool is of a completely new and simple design, with extremely few parts, derived from the most recent toothbrush technology. There is no housing and there is no sliding of the tool, because the main movements are bolted directly to sturdy levers, eliminating any need for lubrication. The extremely rigid construction and smart design of the drive systems allows very high tufting speeds.

Eliminating the start/stop cycles of the main motor, and equipped with the newest generation of electronics, NM is also very energy efficient.

The brush holders have 5 axes of movement, all controlled by servomotors. With generous amounts of tuft flare possible in both directions, as well as the possibility of parallel tufting, this machine is extremely versatile and quick to change over with a minimum of mechanical changes. Special brush holder fixtures for all kinds of brushware are available.

The finished products can be taken out by the operator, or ejected automatically onto an outfeed conveyor to reduce the operator’s work load. As an option, a stack hopper system to load the blocks automatically is available.



NM is compact, efficient, and safe to operate.



NM is laid out as a small carousel with just 3 clamping stations. Loading happens far away from tool and drill.



Aeola

A new chapter in brush manufacturing technology

- + Filling tool runs non-stop at extremely high speed
- + Block and fiber loading right next to each other
- + Manual and automatic block loading possible in the same machine
- + User-friendly Winbrush programming software



Up to 1000 tufts
per minute



1 filling tool
without housing
or lubrication



Reduced power
consumption



Compact and
flexible carousel



Ready for a
new chapter in brush
manufacturing technology?

GB Boucherie nv
Stuivenbergstraat 106, 8870 Izegem – Belgium
+32 51 31 21 41 – info@boucherie.be
www.boucherie.com

NM and AEOLA machines from Boucherie: a different approach to modern brush making.

Aeola : a new chapter in brush manufacturing technology



Aeola is available in a variety of automation levels: from a compact drill/fill machine up to a fully automatic production cell.

With the Aeola, Boucherie has developed a totally different machine concept for household and personal care brush manufacturing : compact, simple and extremely efficient. Traditional double header machines of today take up lots of floor space, and often run at less than their full potential because operators can't keep up. An extremely fast running single tool machine is more compact, will run at a higher efficiency and will be much simpler to maintain.

Aeola uses Boucherie's unique and innovative technology, which allows the combination of a very high tufting speed with a maximum of trimming/flagging time. This is possible because the independent brush holders only spend as much time as required in each station, and the time savings from other stations can be used to spend more time finishing the product.

Just like the NM machine, Aeola is laid out as a compact carousel with very good accessibility for maintenance and change-over. There is one filling tool that runs at a very high speed, without stopping between consecutive brushes. Drilling is done by means of several drill units to have an extended drill life. Optional electronic trimming, flagging and beating are arranged around the same carousel, so that brushes always stay in the same clamp throughout the whole process. The brush holders have 5 axes of movement, all controlled by servomotors. With the full 180° of tuft flare possible in both directions, this machine is extremely versatile and quick to change over with a minimum of mechanical changes. Special brush holder fixtures for full round toilet brushes, full round hair brushes and Scandinavian style dish brushes are available.

The Aeola is available in different degrees of automation: from a drill and fill machine with manual loading up to a fully automatic brush manufacturing cell with automatic loading and integrated trimming. A particularly interesting configuration is the "Version 3" machine with manual block loading and integrated trimmers. This machine has the fibrebox, the loading window for the blocks and the unloading conveyor for the finished products all conveniently close to each other on one side of the machine, making it a very practical and compact production cell for shorter production runs : the integrated trimming/flagging station eliminates any additional work for the operator, which allows to run the machine at optimum speed, and all of this with the footprint of just a drill/fill machine.



Aeola is available with a wide range of automation options to boost your production efficiency.



Aeola: the single filling tool is extremely simple and maintenance free, and runs at very high speeds.

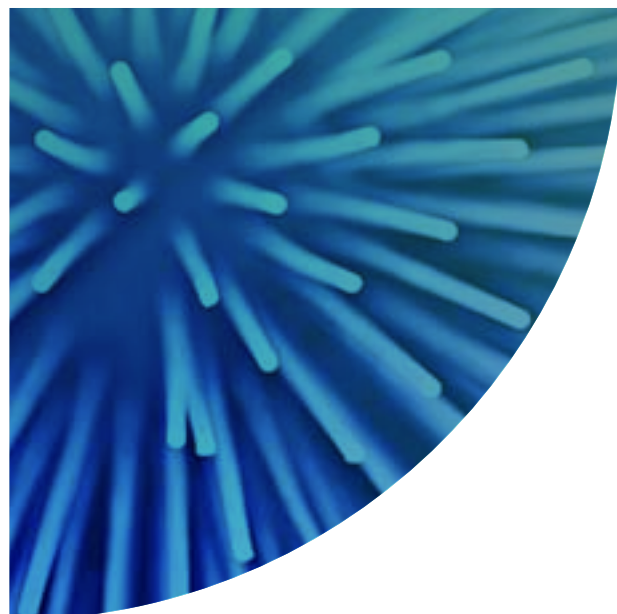
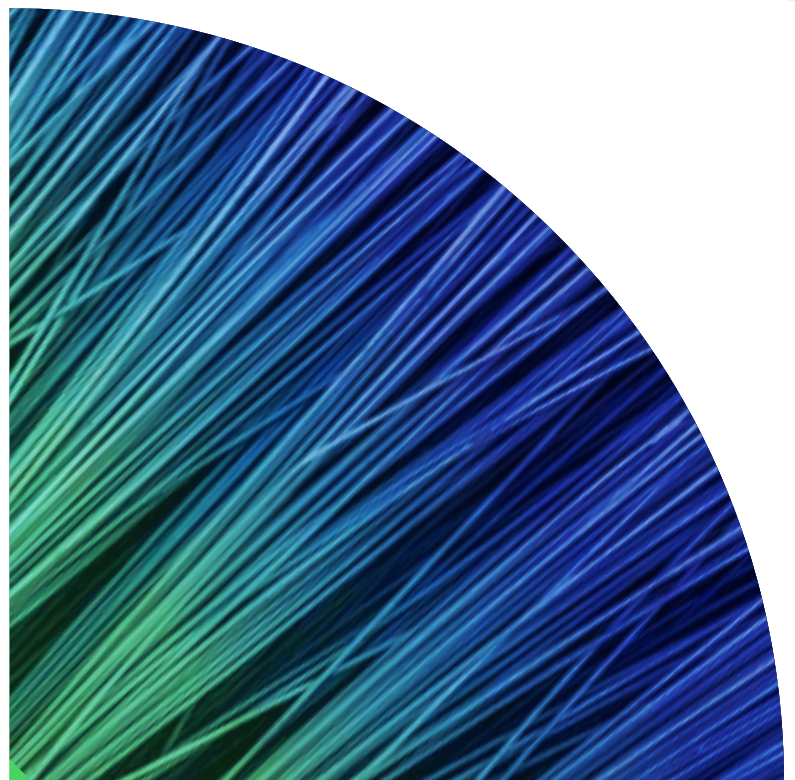
www.boucherie.com



www.worldbrushexpo.com

The brand
new trade fair
for the brush,
paintbrush,
paint roller and
mop industries

**MAY 22-24
2024
BOLOGNA
ITALY**



an event by



In Partnership with



A meeting with the owner of Yongli Filaments and Bristles: Mr Wang Haiou at the company head office during a recent visit to the historic city of Nanjing, China



Mr Wang Haiou

I was pleased to meet the owner of Yongli Filaments and Bristle: Mr Wang Haiou at the company's head office during my recent visit to the historic city of Nanjing, China. I asked Mr Wang how he got started in the Brush industry

Mr Wang told me he started by joining a state-run company as a Bristle salesman.

Later, in 1997, he decided to set up his own bristle processing factory which he ran from 1999 to 2004 and in the end he became the number one bristle exporter from China. He told me this was because he insisted on quality and his position is based on the customer statistics certified by Chamber of Commerce.

Initially he worked with well known bristle traders but as time went on some of them dropped out of the trade and he decided to work directly with brush makers. I asked Mr Wang about his educational background and

his rather surprising reply as that his original major at university was American drama!

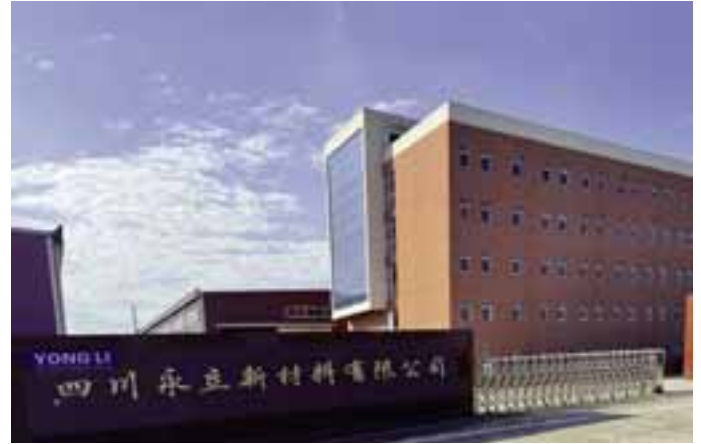
Mr Wang is clearly a man who embraces rapid change and he saw that many changes were taking place. Traditional pig raising has now ceased in all areas apart from Chungking and Mr Wang began to plan for the future and thought that maybe the trade bristle would disappear very soon. Accordingly, he set up his own synthetic filament factory in 2002. From the start, his factory became the second biggest filament factory in China!

I was astonished by his vision and wondered why he didn't start smaller. His answer was surprising. I asked: "Just by setting it up, bang, you're second biggest in China! Why didn't you start small?"

Mr Wang replied: "At that time there was almost no large filament company in China, only some very

small ones and we started with a facility of 10,000 square metres. We financed it by using savings and support from the bank because we were already significant in the industry and we had built up a trustworthy reputation. We mortgaged our land and the building to the bank and the land is probably worth 10 times what it was then".

Mr Wang continued: "four years ago I decided, because the filament factory I built was in the high cost coastal area. I decided to relocate the factory and move to the Chengdu region. It's a very big city, but we choose an industrial zone near where we could find sufficient workers at lower expense. All in all, we obtained more affordable labour along with lower costs for water, electricity and with very good tax policy. We also upgraded our machines. We now have two big extrusion machines and one small.



At Yongli we use our own filament and bristle to make brushes for a better quality control and pricing. We choose the best raw materials from selected area and handle them professionally.

Yongli factory located in Sichuan, China, where well-trained management and technician team with decades of experience always strives for better product and services for you.

As far as quality is concerned we are second to none and for example, we are supplying one Austrian brush company who is providing brushes for the major fashion brands. My agent Mr. Rothlaender is handling this business'

I asked Mr Wang "How did you meet Mr Rothlaender?"

Mr Wang replied: "I think it was maybe 15 years ago, it is a long story. Let me think how to tell you about it step by step. In 1994, I still had some business in brushes. I had a very good supplier of brushes and we decided to exchange some of our shares. This meant that he became the shareholder of my filament factory and my bristle factory and I became a shareholder his brush factory and this brush factory was working with Mr. Rothlaender and he introduced Mr. Rothlaender to me. After several contacts and discussion, he becomes my agent in Europe. As I mentioned, we have been working

together for 15 years. Now it is planned that his daughter Caroline will take care of his business in the future".

Mr Wang continued: "The reason I set up my filament factory is because I was worried about the future of the bristle trade. Bristle will eventually be non-viable as a practical material. Then, step by step, I found that the filament business needs advanced technology. Hence, we worked with several universities and colleges of chemistry, for example, because we are the bristle supplier, we know how to produce filament similar to bristle.

Let me show you some bristle, for example. This is a 60 or 57 millimetres . Usually, we have to mix them 90% tops. 90% tops means 90% of the filament of the reach. And the higher the top, the higher the cost will be. That is opposite in the filament industry."

I asked: "Oh, because you want the layoff?"

Mr Wang concurred: "Yes, because the filament, when it is produced it, it's all 100% top, but 100% tops synthetic filament does not paint well. So, we have to put some short sizes in it. The question is: how do we do that. Some people just like 64 millimetres, they put 57 and 51 into the mix which is still not random enough.

As a brush manufacturer, we know how to do it. I think that's the reason we are running ahead of our competitors. We also use some chemicals to make the surface of the filament rough. The rougher the surface is, the higher the paint pick up less leakage.

We treat the filament with special chemicals. You cannot just use special chemicals alone. You have to use some rinsing liquid to wash it later. Also, we're the first people to invent this process. We call it Napoly which consists of several kinds of filament mixed together.



As the biggest monofilament manufacturer, Yongli has the most advanced extrusion lines producing the best quality filaments.



YONGLI management team and Mr. Karl-Ernst Rothlaender. Our co-operation with Mr. Rothlaender offers you door to door service, quality checks and products consultant in Europe.

We use a Chinese made machine for mixing which costs one tenth of traditional flat mixing machines and is more efficient. We now even export the mixing machine to Europe. The mixing machine factory wants to work with us because we have the customers, we're sending machines to Europe and to Brazil. That's not my main business of course. It's just a few items.

Now worldwide, we have the issue of being eco-friendly and to use recycled material. We have to be very careful because when we produce filament, like PET and PBT, we must use a recycled material, which is genuinely PBT and PET. Some competitor factories are buying recycled material from the market and none of them can be sure of the formula of this kind of recycled material.

We only use the recycled material from our factories or from some reliable recycling sources.

In summary, our big advantage is we have a bristle filament factory,

a bristle factory, and a brush factory. Every time we invent or innovate some new filament or some new mixtures, we test it in our paintbrush factory".

So, I asked: finally, then, what are your ambitions,

Mr Wang replied: "I just want to focus on my own business. To keep the good quality to serve the customers well. But we spend a lot of money in the lab for innovation. We are still trying to innovate new products for the paint applicator industry".



Mr Wang, Brian Hall and Ryan Wang at the Yongli head office

Rothlaender.com

China-Bristles

Mixtures • Stiff Cuts

Horsehair • Finehair

Polykaron Filaments

Napoly • Vercel

Paintbrushes • Rollers

Deco-Tools

Stock-Distribution

Custom Made

Accessories • Machinery

Contract-Manufacturing



Import Experts. Since 1865.

Rothlaender & Co. GmbH
Fon +49 40 23 888 10

20097 Hamburg Germany
Email contact@rothlaender.com



Plastic blocks for cleaning articles



MILEVA Srl

Via Gerbolina, 36 - 46019 Viadana (MN) - Italy

Tel. +39 0375 785912 - Fax +39 0375 785913

E-mail: info@mileva.it - Skype: omar-mileva

www.mileva.it



HANDLE SPECIALISTS

The reason why we use painted metal handle

FASS INNOVATIONS

Finally World Brush Expo is coming, and all the Brushwork readers start to think about that: everybody is looking for some anticipations, the rumors are the most popular topic, and all the companies are working hard to be well prepared for the most important show of our market. What kind of innovations we are going to see? Which kind of machine do you think will be able to surprise all of us?

From last Interbrush fair, FASS R&D department identified some new and strategic items and concept to develop before reaching the following year congress: these strategic products and ideas come from a deep reflection on the economical and climatic environment, two elements strictly interconnected that we would like to share with Brushwork.

Actual economic context

2024 means instability and dominance of external factors. Before Covid we were pushing on globalization model, now we are talking about re-shoring and geo-economical limits for business development. How to deal with political

and energy crises, pandemic emergencies and climate change? Things are changing daily, more than what we were able to imagine: from one side the political instability of many countries worldwide is generating problems for the exportations, reducing the possibilities of growth, from the other side the strong sensitization for a “plastic-free” world is creating a lot of question marks for our category. It means that there is less space for growing internationally and that these kind of products (we are referring to the traditional brooms and brushes) are “unfortunately” losing spaces on the supermarket shelves.

It is all a matter of savings: cost, plastic, space. It’s going to be a hard challenge!

100% recycled metal handle

FASS decided to invest time, know-how and experiments for developing a 100% recycled metal handle. First of all it is possible thanks to the painting technology, that allows FASS to avoid the more common plastic coating: recycled powder with alternative and sustainable material

Visit us Online www.brushworkmagazine.com

for all the components injected create a perfect mix to satisfy all the most recent needs. This special handle is part of the new eco-line that FASS is launching on the international market. From South America, passing through the European countries and down to Australia, a lot of people request these kinds of items.



Telescopic and multipiece solution

Internal R&D, with a design thinking approach, decided to put a great effort on new telescopic and multipiece handles, combining customers' needs with new solutions based on market research. These handles are the synthesis of new market trends: thanks to the ability to save space, they are to more adapt for online sales and for the reduced spaces on the shelves of supermarkets.

Tailor-made metal handles

This is the key concept that FASS is going to introduce during World Brush Expo. It is a revolutionary approach, based on flexibility, design and customization: the vertical integration allows FASS to satisfy the strangest request, starting from special moulds with 3 different materials up to the special type of powder.

The management believes that

quality, style and differentiation are the only ways to work with different customers, without selling same caps, same colors and of course same look. The goal is trying to create the same feeling you have every time you buy something extremely customized: it is completely different respect to all the others, it's simply and incredibly yours.



**TAILOR
MADE**
HANDLE
SPECIALISTS





DuPont Filaments – now owned by Celanese

Our ownership may have changed but our commitment to provide the highest quality filament remains the same

For more than 80 years, DuPont Filaments was recognized as a leader in innovative synthetic filaments that enable brush manufacturers to address emerging trends and meet evolving consumer expectations. Building on a legacy of innovation, its global team of scientists and development engineers continued to expand the broad range of filament offerings for premium quality brushes and industrial applications, giving leading global brands and brush manufacturers ever more flexibilities in brush designs. Now, the products and innovation continue under the new ownership of Celanese.

Health deserves the best filaments - Toothbrush Filaments

The most important component of a toothbrush lies in the bristle. With outstanding industry expertise accumulated over the years, coupled with proven technologies, Celanese is dedicated to the oral care brush industry with our nylon solutions under the brand names of Tynex®(nylon 612) and Herox®(nylon 610). Leading toothbrush brands and manufacturers are able to produce very high quality brushes with a balance of consistent quality, wear performance and unmatched productivities in tufting and end-rounding. As consumer trends in toothbrush are increasingly focused on the six major areas of:

- 1) Visual Attractiveness
- 2) Interdental Cleaning
- 3) Plaque Removal
- 4) Gum Comfort
- 5) Gingival Cleaning
- 6) Anti-microbial properties within the filaments.



The company has been working closely with the leading global brands in oral care as well as toothbrush manufacturers by fulfilling these needs with our broad range of innovative products in the portfolio. Tynex® Brilliance Pro filaments, is a prime example of the company's newest innovation that combines both visual attractiveness and functional benefits. With its unique diamond shape profile and distinguished color effects, it is the ultimate filament for premium toothbrushes. The soft bristle of Tynex® Brilliance

Pro, with its outstanding translucency and glistening look brought by a proprietary color recipe, will make any toothbrush an “eye-catcher” on the shelf while retaining the superior cleaning ability for interdental and plaque removal performance. As Herox® was successfully reintroduced to the toothbrush filament market, it is known as a “green” material, with 67% of its ingredients coming from renewable sourced raw material. Another innovation, Herox® Binchotan

Celanese Filaments

**YOUR BRUSH DESERVES
THE BEST FILAMENTS**



Our name has changed but our commitment to provide the highest quality filament remains the same. Our customers continue to recognize us as a global leader in high performance filaments with excellent customer service. We will continue to advance our innovations because we believe YOUR BRUSH deserves the BEST FILAMENTS.



Design Freedom. Limitless Possibilities.

filaments was added to the product portfolio in 2015 to provide tailor-made solutions targeting customer needs and growth in Asia Pacific. Capturing the emerging trend of using charcoal in various dispensary applications especially in Asia, yet another innovation was brought to the market by combining nylon and binchotan charcoal powder. The binchotan charcoal powder used is manufactured from 100% natural wood through a specialized carbonization process in Japan, where binchotan originated.

The combination of nylon and binchotan, with perceived functional benefits commonly known in Asia and increasingly in other regions, allows toothbrush designers to bring new concepts of toothbrushes to consumers. Herox® Link filament is another member of the Herox® family and a new nylon material using co-extrusion technology. It was recently introduced to toothbrush customers who are seeking alternative nylon filament solutions with better cost effectiveness that also retains excellent performance and softness.

Fine Filaments

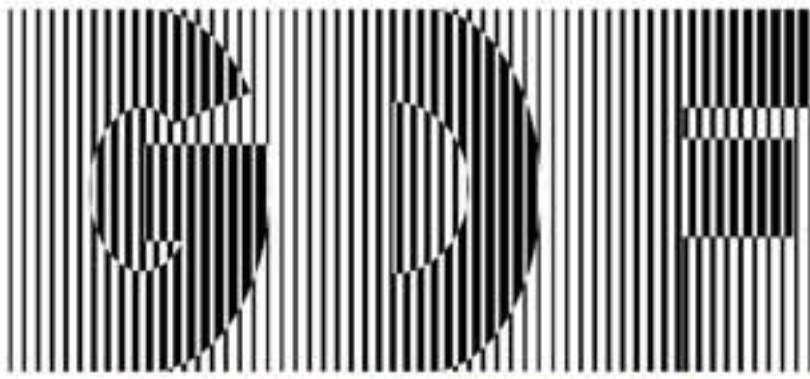
When it comes to the cosmetics industry, consumer needs are dynamic and ever-changing. There is also an increasing expectation for high performance tools as consumer cosmetic applications are more and more specialized towards professional grades. From powder to eyeliner, mascara to nail polish, as well as facial cleaning brushes, consumers are looking for brushes with high performance, durability, ease of cleaning, soft touch-and-feel,



powder pickup / release ... etc. Even if different types of animal hair are still available as options for cosmetic brushes in the market, responsible cosmetic brands are leading the trend to be “cruelty free” and use only synthetic filaments in their brushes. Natrafil® filaments, a pioneering filament from the company’s unique polyester-based material, contain proprietary texturizing additives that create a structured surface that mimics animal hair. Natrafil® filaments offer a synthetic alternative to animal hair in premium cosmetic powder brushes

with more consistency in the bristle while maintaining the touch-and- feel of premium animal hair. Studies have shown that brushes made with Natrafil® filaments have superior pickup and release performance versus brushes made with animal hair. Hygiene in cosmetic products is a serious concern. If you think your makeup brush is bacteria free, think again. Infection causing bacteria can thrive in cosmetic brushes and products that are not adequately cleaned or used beyond its indicated product lifespan.

The company is helping to tackle this problem with Tynex® StaClean® fine filaments. Independent verification by authoritative third-party testing agency has confirmed that Tynex® StaClean® fine filaments are 99% effective in bacteria inhibition. This is due to the silver-oxygen combination in the filaments that inhibits the growth of micro-organisms. The launch of Tynex® StaClean® fine filaments addresses the hygienic concern for cosmetic brushes.



G.D.F. offers a single purchasing point to satisfy all your requirements.

Including: plastic blocks (foamed plastic blocks: coloured inside, curved brooms, brushes, wire brushes, flat brooms, outdoor and garden brooms, floor cleaning brushes, push brooms, wipers – solid plastic blocks: for brooms, brushes, floor brushes), metal handles, telescopic poles, buckets, mops, cleaning tools, cart bags.

Supplies for the Brush Industry

since 1983

www.gdfsrl.eu



G.D.F. S.R.L. unipersonale
Supplies for the Brush Industry
Via Mazzini 27 - Frazione Bazzano - 40053 Valsamoggia (BO)

Phone: + 39 051830189
fax: + 39 051830263
mob phone: + 39 340 5743265

Emails: gdf@gdfsrl.eu -
gdfwin@tin.it -
Certified: gdfsrl@arubapec

Website: www.gdfsrl.eu
Facebook: G.D.F. sas
IP.IVA: IT02541021206

Efficiency deserves the best filaments – Abrasive Filaments



Creativity deserves the best filaments – Paintbrush Filaments



Abrasive Filaments

Like most industries, steel manufacturers are always looking for ways to increase productivity. The emphasis is on getting more square feet of metal through the mill, cleaned and coated faster than ever before. To accomplish this, steel mills are using more aggressive cleaning solutions creating a degradation problem with typical cleaning brushes because many plastics used in the brush filaments can't handle the extreme pH solutions. Our technical team has solved this problem by adding stabilizers to one of our nylon polymer formulations, effectively extending the pH range where our filaments can be used. Brushes made with these filaments deliver cleaning performance over an improved service life, helping steel manufacturers achieve higher productivity. Another need voiced by customers is higher aggressiveness in metal finishing applications. Tynex® A ceramic grit-containing filaments were developed to meet this need.

Paintbrush Filaments

As paint manufacturers continue to improve water-based paints, there is a need for higher performing brushes. We continue to innovate and provide specialized solutions for our customers. Brushes made with our filament provide better paint pick up, faster application and easier clean-up.

A conversation with David Bian, founder of CIBRUSH and Brian Hall, editor of Brushwork Magazine



During my visit to CIBRUSH 2023, I was pleased to sit down with the show's founder David Bian. We discussed the history and success of the CIBRUSH show, which focuses on the Chinese brush making industry along with attracting international visitors and exhibitors.

CIBRUSH 2023 Shenzhen not only focused on the technological aspects but also on the broader impact of innovation on economic growth and social progress. By bringing together diverse stakeholders, the trade show and associated conference facilitated the exchange of ideas that could lead to breakthrough innovations with significant societal implications. The exchange of knowledge and best practices during the event fostered an environment conducive to economic growth, job creation, and technological advancements that benefit society as a whole.

The first edition of the show took place in 2015 in Shanghai, followed by another edition in 2018. The industry responded positively to the show, particularly the exhibitors who found it beneficial to showcase their machinery and materials. However, David acknowledged that there were some shortcomings in the 2018 edition due to some exhibitors showing finished goods.

David told me that this issue has been rectified with the 2023 edition and exhibitors understand that the show is for exhibiting machines and materials. David is justifiably proud of

the current edition of the show and he spoke of plans for future editions, which are aiming to attract more overseas audiences.

We also discussed the advancements in Chinese brush making machinery and the potential for China to become a leader in the industry. The conversation also touched on the importance of Chinese companies creating their own innovations rather than imitating others and there are strong indications that this is taking place.

David suggested that some foreign companies may face challenges from China's advanced techniques and machines in the future. We both agreed that trade shows play a vital role in the brush industry and we are both looking forward to the World Brush Expo in Bologna in 2024 and CIBRUSH in Shanghai in 2025.

CIBRUSH 2023 Shenzhen was an extraordinary event that brought together industry leaders, innovators, and technology enthusiasts from around the world. This show provided a platform for showcasing the latest advancements and breakthroughs. With a clear focus on technological advances and the immense potential it holds, CIBRUSH 2023 Shenzhen championed innovation, collaboration, and the power of technology to shape a better future. We anticipate that this show will go from strength to strength continuing in Shanghai in 2025.

Lessmann celebrates its 75th anniversary



At the beginning of October, Lessmann “The German Brush Company” held two-day long celebrations to mark the company's 75th anniversary.

In the best late summer weather, 150 invited guests, including customers, suppliers, consultants, neighbors, political representatives as well as friends and family came to the company premises on Friday morning. In addition, all 250 company employees were invited to take part in the official part of the celebration in the festival tent.

Managing Directors Dieter and Jürgen Lessmann welcomed everyone present and shared short anecdotes from the past that went all the way back to their grandfather. Further speeches followed: The mayor of Oettingen, Thomas Heydecker, pointed out in his welcoming speech that typically a company in Germany only lasts for 12 years and Lessmann's 75 years are therefore a great achievement.

Stefan Horst, managing director of the German Tool Industry Association (FWI), praised Lessmann's professionalism, reliability and sustainability in his speech. Overall, however, the term “humanity” is the term that, in his opinion, best describes the two managing directors. In recognition of everything they had achieved, he presented Dieter and Jürgen Lessmann with an award.

At a further point on the agenda, Paul Ostberg, a close advisor to the company, spoke about different options for corporate management and that ultimately it is the right mix of different management positions that makes a company successful.

In addition to the speeches, one of the highlights of the celebrations featured two new films about Lessmann. These showed the company's products and history and on the other hand presented Lessmann as a modern and fair employer in the region.

The rock band from the Maria Stern secondary school from Nördlingen provided the musical accompaniment.

Cornelia Kitzsteiner, Lessmann's sales manager, moderated the program in an entertaining manner.

All invited guests were then shown around the company in small groups and the official event ended with an informal get-together.

Modern industrial company presents itself to the public

On the second day of the celebrations there was an open day for the public. Many visitors from near and far took the opportunity to take a look behind the scenes of the high-tech production facility. Machines were shown in operation, which greatly impressed the guests. The newly built administration building, which was only opened in 2021, could also be visited. Activities were provided such as various games for young and old, a cinema with chips and popcorn and a trivia quiz ensured good entertainment during the tour of the production facility.

Proceeds from the brush flea market donated

The brushes that could be purchased at the brush flea market were very popular. From hand brushes to technical brushes, there was a wide range of brushes at bargain prices. As a thank you for the Oettinger Waldkindergarten setting up a colorful children's program on the open day, the entire proceeds of €2,500 were donated to the kindergarten.

Concluding with an internal celebration for employees

At the end of the celebrations, the management did not miss the opportunity to invite all employees to an internal celebration on Saturday evening. With good food and drink, everyone celebrated until late into the night in a good atmosphere.

Open Letter to the Esteemed Members of FEIBP, ABMA, and the Global Brushmaking Community from Alessandro Acquaderni: President, FEIBP



Alessandro Acquaderni, (President) 2nd Left and Simon Lorillière, (Vice – President, left) hard at work generating commitments for the 64th FEIBP congress, 9 – 11 October 2024 / Ibiza (Spain)

Dear valued friends, members of the federations and brush lovers,

It gives me immense pleasure to share the promising updates surrounding the World Brush Expo (WBE) 2024, set to take place in the beautiful city of Bologna, Italy. A hallmark event that evolved from the legacy of Interbrush in Freiburg, this expo promises to be a groundbreaking affair for our industry.

1. A Resounding Success in the Making:

Firstly, I am thrilled to announce that WBE 2024 is experiencing unparalleled success months ahead of its opening. Over 100 esteemed exhibitors from across the globe have already confirmed their presence, a testament to the expo's growing significance. Additionally, a significant number of industry enthusiasts, customers, and professionals have booked their trips and accommodations in Bologna, setting the stage for a bustling, engaging, and productive event.

2. The Importance of Active Participation:

The brush industry is evolving at a rapid pace, extending its tentacles into diverse arenas. Whether it's paint brushes, oral care, technical brushes, cosmetics, hygiene, personal care, household products, machinery, automation, filaments, or components for brush making - our industry is truly global and multifaceted. Exhibiting at WBE is not merely about showcasing products; it's about being a part of a movement, connecting with a diverse audience, and tapping into opportunities from every corner of the world.

3. Plan Ahead for a Seamless Experience:

As we approach the event date, Bologna is gearing up to

welcome the global brushware community. We anticipate a surge in demand for accommodations and flights. To ensure a comfortable and hassle-free experience, I strongly urge all attendees to book their flights and hotels well in advance. For guidelines, recommendations, and travel arrangements, please visit the dedicated Hotel & Travel section on our website: <https://www.worldbrushexpo.com/hotel-travel/>. It's not merely about securing a place to stay; it's about making the most of this once-in-a-lifetime opportunity without any hitches.

4. Stay Updated and Discover Bologna's Charm:

The digital realm offers us a gateway to stay connected and informed. For real-time updates, announcements, and industry news related to WBE 2024, I invite everyone to follow and engage with our official LinkedIn showcase page: World Brush Expo on LinkedIn. Beyond the event's specifics, our page also boasts unique hints and intriguing facts about the enchanting city of Bologna. Dive into these tidbits to enrich your stay and make your experience in Bologna truly unforgettable.

In conclusion, the World Brush Expo 2024 is more than an event; it's a testament to our collective vision, passion, and dedication to the brush industry. I am confident that with your active participation, WBE 2024 will set new benchmarks and pave the way for a brighter, more innovative future.

Looking forward to seeing you all in Bologna!

Warm regards,
Alessandro Acquaderni
President, FEIBP

World Brushwork Catalogue Entry Form 2024



Please Reply Now!

Free Subscription to Brushwork Magazine for one year if you pay for an entry to the World Brushwork Catalogue.

PLEASE FILL IN THE FORM ON THE BACK PAGE AND THEN SCAN AND EMAIL ALL FOUR PAGES TO US AT brianhallx@btinternet.com

or mail it to:

Airstream Communications Ltd,

46455 Uplands Road

Chilliwack, BC

V2R 4W1

Canada

Any Queries, please contact brianhallx@btinternet.com

PLEASE Return by December 15th 2023

Enter your company's details here:

PLEASE WRITE CLEARLY, IN BLOCK CAPITALS AND IN BLACK INK

<p>Company name:</p> <input type="text"/>	<p>Brief description of products/services offered:</p> <input type="text"/> <input type="text"/> <input type="text"/> <input type="text"/> <input type="text"/> <input type="text"/>
<p>Alphabetical letter you wish to appear under: <i>(for computer sorting purposes)</i> <input type="checkbox"/></p> <p>Address:</p> <input type="text"/> <input type="text"/> <input type="text"/> <input type="text"/>	<p>List of key employees with job titles for inclusion:</p> <input type="text"/> <input type="text"/> <input type="text"/> <input type="text"/> <input type="text"/>
<p>Tel. No.: <small>(including country code)</small></p> <input type="text"/> <small>country area number</small>	
<p>Fax No.:</p> <input type="text"/> <small>country area number</small>	
<p>e-mail No.: <small>(or Telex)</small></p> <input type="text"/>	
<p>Website: <input type="text"/> www.</p>	

DO YOU WANT A LOGO AGAINST YOUR COMPANY PROFILE? (TOTAL £125, EURO 150, US \$190) YES/NO

Company Logos

Enhance your Company Profile by sending us a copy of your company logo

One logo against your company profile in The World Brushwork Catalogue for an extra £125, Euro 150, US\$190



Please underline the five categories for your listing.

Each Additional listing you underline will carry a charge of £20/\$30/Euro 25

Brushes 1000

Brushes And Applicators 1000
Abrasive Nylon Brushes 1001
Adhesive Brushes 1003
Agricultural Brushes 1004
Animal Care Brushes 1005
Artists Brushes 1006
Automotive Brushes 1007
Banister Brushes 1008
Bath & Sauna Brushes 1011
Bottle Brushes 1012
Brooms 1013
Brush Mats 1015
Car Wash Brushes 1018
Car Wash Cloth 1018.2
Car Wash Foam Cloth 1018.5
Ceiling Brushes 1019
Ceramic Brushes 1021
Circular Brushes 1022
Cleaning/Janitorial 1023
Cloth Brushes 1023.5
Cosmetic Brushes 1024
Craft Brushes 1028
Custom Designed Brushes/Brooms 1030
Cylinder Brushes 1031
Deburring Brushes 1031.1
Deck Scrubs 1032
Decorators Tools 1033
Dental Brushes 1034
Dish Wash & Vegetable Brushes 1035
Draught Excluders 1037
Dusting Brushes 1038
Enamel Brushes 1039
Engineering Brushes 1039.5
Fine Hair Brushes 1044
Flocked Paintrollers 1046
Floor & Window Squeegees 1047
Floor Brooms 1048
Floor Maintenance Items 1049
Floorcleaning Brushes 1050
Food Processing Brushes 1052
Garage Brooms 1053
Glass & Bottle Brushes 1055
Goat Hair Brushes 1057
Hair Brushes 1059
Hand Brushes 1060

Hand Scrub Brushes 1062
Household Brushes 1063
Hygiene Brushes 1064
Industrial Brushes 1067
Jewellery Brushes 1068
Kitchen Brushes 1069
Marine Brushes 1073
Masonry Brushes 1074
Mechanical Road Sweeper Brushes 1075
Medical Brushes 1076
Metal Strip Brushes 1076.5
Miniature Brushes 1078
Mops 1079
Mop Frames 1079.1
Nail Brushes 1080
Paint Brushes 1085
Paint Edgers 1086
Paint Pads 1088
Paint Rollers 1089
Paint Roller Accessories 1090
Paper Hanging Brushes 1095
Pastry Brushes 1097
Personal Hygiene Brushes 1098
Polishing Disks 1103
Power Brushes 1104
Radiator Brushes 1106
Roller Brushes 1107
Rotary Brushes 1108.5
Sanitary Brushes 1110
Sash Brushes 1111
Scavenger Brushes 1112
School Brushes 1113
Screw Cap Brushes 1114
Scrubbing Brushes 1115
Scrubbing & Deck Brushes 1116
Sealing Brushes 1117
Shaving Brushes 1118
Sheepskin Polishing Pads 1119
Shoe Brushes 1120
Sign Writing Brushes 1121
Specials To Customer Specs 1124
Speciality, Designed And Filled 1125
Spiral Brushes 1127
Squeegees 1128
Staple Set Brushes 1128.5
Stencil Brushes 1129

Street Brooms 1130
Street Sweeping Brooms 1131
Strip Brushes 1132
Sweeper Brush Sections 1133
Technical Wire Brushes 1135
Toiletry Brushes 1137
Toothbrushes 1138
Tube Brushes 1139
Tube Tied Automotive Brushes 1139.5
Twist Knot Brushes 1140
Twisted In Wire Brushes 1141
Vacuum Cleaner Brushes 1143
Varnish Brushes 1144
Wax Applicators 1145
Whisk Brooms & Dust Pans 1147
Window Wash Brushes 1149
Wire Industrial Brushes 1150.5
Wire Brushes, Hand 1151
Wire Brushes Rotary 1152
Wire Scratch Brushes 1153

Machinery 2000

Artist's Brush Making 2001
Broom Making Machinery 2002
Brush Making (General) 2004
Bundle Wrappers, 2005
Cosmetic Brush Making 2007
Crimping Presses 2008
Cylinder Brush Making 2009
Dental Brush Machines 2010
Disc Brush Machines 2010.5
Extrusion Machinery 2010.7
Extrusion Line 2011
Filament Hank Cutting 2012
Finishing eg Cutters, Flaggers, Cleaners 2013
Flirting Machines 2014
Frame Bending Machines 2014.5
Hairbrush Making 2015
Handle Making 2016
Household Brush Making 2018
Industrial/Technical Brush Making 2019
Injection Moulding Tools 2020
Inspection Machines 2021
Mixing Machines 2022
Nail Brush Machines 2023

PLEASE WRITE CLEARLY, IN BLOCK CAPITALS AND IN BLACK INK

Nailing Machines 2024
Monofilament Finishing 2027
Monofilament Bundle Cutters 2028
Mop Making Machine 2029
Moulds 2030
Paintbrush Making 2031
Packaging Machinery 2032
Paintroller Making 2034
Paintroller Finishing 2035
Personal Brush Making 2036
Plastic Moulds For Brush Blocks,
Screwcaps & Packs 2039
Precision Bristle Knot Picking
Machines 2040
Processing Machinery 2040.5
Robots 2041
Rotary Brush Making 2043
School Brush Making 2044
Scrubbing Brush Making 2045
Secondhand Machines 2046
Speciality Brush Making 2047
Stapling Machines 2047.1
Street Sweeper Brush 2047.5
Strip Brush Machines 2048
Shaving Brush Making 2049
Technical Brush Making 2050
Tipping/Flagging 2051
Toothbrush Making 2052
Transfer Lines for Brush Making 2053
Trimming Machines 2055
Tuft Dividing Machines For
The Blind 2055.5
Twist Knot Machines 2056
Twisted In Wire Brush Making 2057
Two Component Dispensers 2058
Vacuum Cleaner Brush Making Machines
2060
W C. Brush Making 2061
Wire Crimping & Cutting 2061.5
Wire Straightening Machines 2061.7
Wire Hank Spooling machines 2061.8
Woodworking Machinery 2062

Synthetic Fillings 3000
Synthetic Fibres (Various) 3000
Synthetic Fabrics for Cleaning and Painting
3000.2
Synthetics/Hair Mixtures 3001
High Temperature Filament 3002
Monofilaments 3003.5
Nylon 3004
Nylon Abrasive 3005
Nylon-Flagged 3005.5
Nylon - Hollow 3005.7
Nylon - Tapered 3006
Polyester 3007
Polyester Hollow 3007.5

Polyester (Tapered) 3008
Polyester PBT 3008.5
Polyolefins / Polythene 3009
Polypropylene (PPN) 3010
Polystyrene 3012
PVC 3013
PVC Extrusions 3013.5
Special Filament 3014
Static Control Materials 3015
Thermoplastic Elastomers 3017

Wire 4000

Wire - General 4000
Wire - Bare Anchor Wire Flat 4000.1
Wire - Brass 4001
Wire - Brush Stapling 4002
Wire - Crimped 4003
Wire - Flat 4003.5
Wire - Hardened & Tempered Steel 4004
Wire - Phosphor Bronze 4006.5
Wire - Stainless Steel 4009
Wire - Steel 4010
Wire - Steel Rolled 4010.5
Wire - Tooth Brush Anchor 4012
Wire Handles, Sheared Parts 4014
Wire Products, Springs 4015

**Natural & Organic Filling Materials
5000**

Cattle Tail Hair 5002
Flagged Hair 5004
Goathair 5005
Hair Mixtures 5006
Hair/Synthetic Mixtures 5007
Horsehair 5008
Horse Tail 5010
Mixtures 5011
Natural Bristle 5012
Natural Hair 5013
Ox Ear Hair 5013.5
Prepared Mixtures 5014
Soft Hair for Artist's Brushes 5015.5
Vegetable Fibres 5016
Weasel/Kolinsky Hair 5017

Backs And Handles 6000

Artist Brush Handles 6001
Broom Handles 6002
Broom Handles Metal 6004
Broom Head Fittings 6005
Brush Backs & Handles 6006
Paintbrush Handles Plastics 6006.5
Paintbrush Handles Wooden 6008

Sundries 7000

Abrasives 7001
Adhesives 7002
Brush Blocks 7007.5

Buckets - Plastic 7007.12
Cleaning Equipment 7007.2
Cosmetics, Toothpaste, Shaving Cream and
Others 7007.3
DIY Tools 7008
Dowels 7008.3
Draft Seals 7008.5
Drills for Brushmaking 7008.7
Dust Pans - Plastic 7008.6
Epoxy - Two Part Brush Setting
Compounds 7009
Epoxy & Polyester Glue for Paint Brushes
and Rollers 7009.5
Extension Poles 7010
Extension Poles (Telescopic) 7011
Faux Finish Painting Tools 7011.5
Ferrules 7012
Ferrule Inserts 7013
Floor Mats 7014
Hand Tools 7015
Household Cleaning 7015.5
Injection Mouldings 7016
Masking Tapes 7016.5
Metal Parts for Wire Brushes 7017
Metal Stampings 7018
Microfibre Flat Mops 7018.2
Mop Components 7018.1
Mop Handles & Hardware 7018.5
Mop Yarn 7019
Mops Buckets and Ringers 7019.5
Paint Rollers Accessories 7021.3
Paint Roller Components In Plastic 7022
Paint Roller Fabric 7023
Paint Roller Frames 7024
Painting Tools 7025.1
Paint Tray Inserts 7026
Paint Trays - Metal & Plastic 7027
Plastics 7027.5
Plastic Mouldings 7030
Putty Knives and Scrapers 7030.1
Scouring Sponges 7033.5
Tape For Mop Headbands 7037
Textiles, Manmade and Natural 7037.5
Tufts for Brushes 7038
Water Pressured Telescopic Poles 7042
Woven Mop Fabric 7043

Design 8000

Design Agency 8001

Please specify any other products you may
require:

PLEASE WRITE CLEARLY, IN BLOCK CAPITALS AND IN BLACK INK

Ensure your Entry to the
World Brushwork Catalogue
Subscribe to **Brushwork Magazine**
and get a free Entry to the Catalogue.

**The most cost effective way to list your Company:
Only: \$US 185 or 170 Euro or £UK 145. Please specify currency**

PLEASE WRITE CLEARLY, IN BLOCK CAPITALS AND IN BLACK INK

Please make payment by **American Express / Mastercard / Access / Visa** (see below)

OR

- Electronic transfer payment direct to our bank

AIRSTREAM COMMUNICATIONS LTD

Institution Number 003

Transit Number 01560

Account Number: 4001095

Bank Address:

RBC Royal Bank

200-525 Highway 97 South

Kelowna, B.C. Canada.

(For Electronic Transfers please ask your bank to quote :

Swift Code ROYCCAT2

Please note: Our Company does not accept bank charges incurred through agent banks.

Your name and address:

Billing address (if different from above):

Remember, advertising is a valued part of the
World Brushwork Catalogue.

Please check box if you would like further information:

I hereby authorise you to debit my
American Express / Access / Visa / Master Card:
and store my company details on computer
(to comply with the Data Protection Act of UK Government).

Name:

Signature:

Card number:

Expiry date:

Security code:

Visa/Mastercard (3 digits on back) Amex (4 digits on front)

PLEASE WRITE CLEARLY, IN BLOCK CAPITALS AND IN BLACK INK

Brushwork

Worldwide Directory of Brushmakers and Suppliers

ADHESIVES

Collanti Concorde SRL

Via Schiaparelli, 12
ZI - 31029 Vittorio Veneto (TV)
Italy
Tel: ++39 0438 912121
Fax: ++39 0438 501822
Email: info@collanticoncorde.it
Web: www.collanticoncorde.it

Products/Services

Chemical Company Specialized in the production of Glues and Industrial Adhesive since 1979.

Key Personnel

Gemignani Gianluca: Export Technical Assistance
Ferruccio Masetto - Export Manager



Epic Resins

600 Industrial Blvd
Palmyra, Wisconsin 53156 USA
Tel: ++1 800 242 6649

email: customerservice@epicresins.com

Website: www.epicresins.com

Epic Resins is a formulator of one and two component epoxy and polyurethane adhesives for use with natural, nylon, polyester, olefin and vinyl filaments. Epic Resins has long served the paint applicator industry with a complete line of standard products, as well as the ability to custom-formulate a special product for the customers' special needs. Established in 1958, Epic is ISO 9001 and ISO 14001 Certified.

Key Personnel

Dan Veenhuis: President
Jon Zarnstorff: Sales Manager
Randy Veenhuis: Plant Operations



BROOMS BRUSHES & HANDLES

Fass S.p.A

Via Carlo Alberto Dalla Chiesa 984
51036 Larciano-Pistoia
Italy
Tel: ++39 0573 84881
Fax: ++39 0573 849172
e-mail: m.niccolai@fass.it
Web: www.fass.it

Products/Services

Brooms, Brushes and Handles

Key Personnel

Celestino Niccolai (President)
Simone Niccolai (CEO)
Matteo Niccolai (product manager)
Michela Balducci (sales manager)

BROOMS BRUSHES & HANDLES



Hillbrush

Norwood Park, Mere, Wiltshire, BA12 6FE

Tel: ++44 1747 860 494

Fax: ++44 1747 860 137

e-mail: info@hillbrush.com

Website: www.hillbrush.com

Products/Services

Hillbrush is the largest UK manufacturer of brushware and hygienic cleaning tools, selling to a global customer base. Renowned for quality and granted the Royal Warrant by HM The Queen in 1981.

Key Personnel

Charlie Coward - Managing Director
Andy Coward - Managing Director
Philip Coward - Chairman
Sara England - Sales
Jordan Osborne - Marketing

FLOCKED PAINT PADS AND ROLLERS



FLOCK DEVELOPMENT & RESEARCH CO. LTD.

Clarence Mill, Clarence Street
Stalybridge, Cheshire, SK15 1QF
UK

Tel: ++44 (0)161 3394946

Fax: ++44 (0)161 3432045

e-mail: flock@flockdev.co.uk

Website: http://www.flockdevelopment.co.uk

Products/Services

World's Largest Manufacturer of flocked roller, premier flocked paint pad manufacturer, shipping to over 45 countries to all major brands

Decking, staining, varnishing and painting systems

Key Personnel

Paul Constantine Managing Director and Global Sales
Sharon Kelly Director
Shane Horsfield Operations Director
Jake Thomas Logistic and shipping manager
Shelley Burnett Accounts Administration order intake
Vanessa Baker Procurement
Callum Constantine Assistant Buyer

FERRULES & HANDLES



Charles E Green & Son, Inc.

625 Third Street
Newark
New Jersey 07107
USA

Tel: ++1 973 485 3630

Fax: ++1 973 485 6510

e-mail: sales@charlesegreen.com

Website: www.charlesegreen.com

Products/Services

Supplier of paint applicator components to the industry.

Paint brush ferrules, Tampico Fiber, brush pins, wood handles, plastic handles, Milliken Nailing Machines, paint rollers and components, metal stamping, wire forming, worldwide shipping. Quality service.

Key Personnel

John V Green III - President
Rebecca Green Sullivan - Vice President
Caitlin E Green - Vice President

HAIR BRUSHES



G B Kent & Sons Plc

London Road
Apsley

Hemel Hempstead

Herts, HP3 9SA

Tel: ++44 1442 232 623

Fax: ++44 1442 231672

e-mail: ac@kentbrushes.com

Website: www.kentbrushes.com

Products/Services

Manufacturer of the highest quality personal care brushes, for hair, bath, nail, shaving, cloth, in wood or plastic. Handmade combs and hairbrushes. Private label undertaken.

Key Personnel

Alan Cosby - Chairman & Managing Director
Ben Cosby - Creative Director
Mac Magdenovic - Export Sales
Steve Wright CEO and Home Sales

MACHINERY



Borghgi SPA

Via C. Colombo 12

Loc. Cavazzona

I-41013 Castelfranco Emilia (Mo)

Italy

Tel: ++39 059 9533911

Fax: ++39 059 9533999

e-mail: info@borghi.it

Website: www.borghi.com

Products/Services

Solutions for the production of machinery for the broom and brush industry.

MACHINERY

boucherie

GB Boucherie NV

Stuivenbergstraat 106
B-8870,
Izegem, Belgium
Tel: ++(32) 51 31 21 41
Fax: ++(32) 51 30 54 46
e-mail: info@boucherie.be
Website: www.boucherie.com

Products/Services

Machinery for the broom and brush industry. Toothbrush machines, Packaging machines, Injection moulds.

Key Personnel

Bart Boucherie Jr - President
Lisa Boucherie
Marc Lammerant
Peter Parmentier
Kris Geldof
Kristof Dupont
Nico Dejonghe



Paggin S.R.L.

Via G. Matteotti 60
30035 Mirano (VE)
Italy
Tel: ++39 3492376859
e-mail: info@paggin.it
Website: www.paggin.it

Products/Services

Paintbrush making equipment.
Mixing machines for bristle filaments and fibres.
Robotic equipment for automation.

Key Personnel

Stefano Paggin - Owner
Mauro Bettiol - Engineering
linda Giana - Accounts



ROTH COMPOSITE MACHINERY GMBH

Forststraße 3
D-35099 Burgwald
Hessen Germany
Tel: ++49 6451 71918-0

e-mail: info@roth-composite-machinery.com
Website: www.roth-composite-machinery.com

Products/Services

Manufacturer of production machines for the brush and broom industry.
Industrial and high performance machines.
Trimming and special machines.

Key Personnel

Thomas Halbrucker - Sales Manager



Wöhler Brush Tech GmbH

Wöhler-Platz 2
D-33181 Bad Wünnenberg, Germany
Tel: +49 (0)2953 / 73-300
Fax: +49 (0)2953 / 73-96300
e-mail: bt@woehler.com
Website: www.woehlerbrushtech.com

Products/Services

We are a leading machinery manufacturer for technical and specialty consumer brushes. We offer solutions for the production of:

- strip brushes
- twist knot brushes
- brush segments and disks
- dental and polishing brushes
- street sweeper brushes
- twist-in brushes
- artist brushes
- paintbrushes and rollers

Further machinery for:

- deburring
- HiT Brushes (surface technology)
- WPC wood grain

Key Personnel

Dipl.-Ing. Matthias Peveling - Managing Director
Daniel Horenkamp, MBA - Managing Director

PAINT BRUSHES AND ROLLERS

ERGONLINE

Ergon Line S.r.l.

Via dei Pioppi, 2
46019 Viadana (MN)
Italy
Tel: ++39 0375 780796
Fax: ++39 0375 780686
e-mail: web@ergonlineroles.it
Web: www.ergonlineroles.it

Products/Services

Professional paint rollers and technical brushes

Key Personnel

Michael Trentini - Business Manager
email: michael.trentini@ergonlineroles.it



VIP S.n.c. di Civierto Giuseppe

Via Ronchi, 15
I - 30037 SCORZÉ (VE)
Tel: ++(39) 041 447213
Fax: ++(39) 041 5849056
e-mail: info@pennelligiaguaro.it
Web: www.pennelligiaguaro.it

Products/Services

Paint Brushes, Paint Rollers. Decorators' Tools, Shaving Brushes, Cosmetic Brushes, 100% Pure Bristle Brushes, Single Wire Continuously Roller, Original Badger Hair, Original Tibetan Goat Hair.



Wistoba Pinselfabrik

Karl-Schmidt-Straße 4
D-37431 Bad Lauterberg
Germany
Tel: ++49 5524 8609 0
Fax: ++49 5524 8609 50
e-mail: info@wistoba.de
Website: www.wistoba.de

Products/Services

Paint brushes and rollers for professionals and DIY.

SYNTHETIC FILLINGS



NORTH AMERICA

Celanese Filaments Americas LLC

Washington Works Plant
8480 DuPont Road
Building 158
Washington WV 26181
Tel: +1-914-548-8602

Products/Services

We provide the highest quality filaments for all your brush applications, plus global delivery to ensure the most cost-efficient production in your local markets.
With manufacturing facilities that span the globe and technical experts in multiple languages, we make it easy to meet all of your filaments needs worldwide.

From FDA-compliant colorful filaments for oral care applications, to long synthetic tapered bristles for paintbrushes and soft "natural feel" filaments for cosmetics, we provide a broad range of product development and manufacturing solutions for your individual product requirements.

SYNTHETIC FILLINGS



EUROPE, MIDDLE EAST, AFRICA

Celanese Filaments Africa, Europe, Middle East

Minckelersstraat 8
NL-6372 PP Landgraaf
The Netherlands
Tel: ++31 45 532 9191
e-mail: filaments@dupont.com

Products/Services

We provide the highest quality filaments for all your brush applications, plus global delivery to ensure the most cost-efficient production in your local markets.

With manufacturing facilities that span the globe and technical experts in multiple languages, we make it easy to meet all of your filaments needs worldwide.

From FDA-compliant colorful filaments for oral care applications, to long synthetic tapered bristles for paintbrushes and soft "natural feel" filaments for cosmetics, we provide a broad range of product development and manufacturing solutions for your individual product requirements.



ASIA PACIFIC

Celanese Filaments Celanese China Holding Co. Limited

Bldg. 11, 399 Keyuan Road Zhangjiang Hi-Tech
Park Pudong New District Shanghai 201203
China

Tel: ++86 21-38622280
Fax: ++86 21-38622820

Products/Services

We provide the highest quality filaments for all your brush applications, plus global delivery to ensure the most cost-efficient production in your local markets. With manufacturing facilities that span the globe and technical experts in multiple languages, we make it easy to meet all of your filaments needs worldwide.

From FDA-compliant colorful filaments for oral care applications, to long synthetic tapered bristles for paintbrushes and soft "natural-feel" filaments for cosmetics, we provide a broad range of product development and manufacturing solutions for your individual product requirements.



SOUTH AMERICA

Celanese do Brasil S.A. South America

Alameda Itapecuru, 506 Alphaville 06454-080
Barueri - São Paulo Brazil
Tel: ++55 11 4166-8690
Fax: ++55 11 4166-8513

Products/Services

We provide you with the highest quality filaments for all your brush applications, plus global delivery to ensure the most cost-efficient production in your local markets. With manufacturing facilities that span the globe and technical experts in multiple languages, we make it easy to meet all of your filaments needs worldwide.

From FDA-compliant colorful filaments for oral care applications, to long synthetic tapered bristles for paintbrushes and soft "natural-feel" filaments for cosmetics, we provide a broad range of product development and manufacturing solutions for your individual product requirements.

Brushwork

Worldwide Directory of Brushmakers and Suppliers

SYNTHETIC FILLINGS



INDIA

Celanese India Pvt., Ltd

Arihant Nitco Park – 6th Floor
90, Dr. Radhakrishnan Salai
Chennai – 600 004
India
Phone: 91-44-2847-2800
Fax: 91-44-2847-3800

Products/Services

We provide you with the highest quality filaments for all your brush applications, plus global delivery to ensure the most cost-efficient production

in your local markets. With manufacturing facilities that span the globe and technical experts in multiple languages we make it easy to meet all of your filaments needs worldwide.

From FDA-compliant colorful filaments for oral care applications, to long synthetic tapered bristles for paintbrushes and soft "natural- feel" filaments for cosmetics, we provide a broad range of product development and manufacturing solutions for your individual product requirements



FILKEMP, S.A.

Rua Francisco Lyon De Castro 28
P-2725-397 Mem Martins
Portugal
Tel: +351 21 9229437
email: info@filkemp.com
Website: www.filkemp.com

Products/Services

Abrasive Monofilaments

Key Personnel

Sofia Teles - Product Manager



Hahl Inc.

126 Glassmaster Road
P O Box 826
Lexington, SC 29071
USA
Tel: ++1 803 359 0706
Fax: ++1 803 359 0074
e-mail: info.lex@perlon.com
Website: www.perlon.com

Products/Services

Hahl Range Synthetic monofilaments: PA6, 66, 610, 612, PA12, Polyester PBT, Polymex, Mylex LDPE, PPN, Bionifil.
Hahlbrasif. 6, Abralon, Abrafil. 612, AbraMaXX.

Key Personnel

Terry Hogan Sales Director – North America
Andrew McIlroy - Sales & Marketing Director
Hahl Range
Thomas Olma - Sales & Marketing Director
Pedex Range

SYNTHETIC FILLINGS



Hahl Filaments GmbH

Rottenackerstraße 2–18
89597 Munderkingen
Germany
Tel: ++49 (0)7393 530
e-mail: info@perlon.com
Website: www.perlon.com

PEDEX GMBH

Hauptstraße Nord 67
69483 Wald-Michelbach
Germany
Tel: ++49 (0)7393 530
e-mail: info@perlon.com
Website: www.perlon.com

Product/Services

Pedex Range: Standard and Innovative synthetic monofilaments for toothbrush and personal care brushes, Medex*5, Dentex*5

Hahl Range: Synthetic monofilaments: PA6, 66, 610, 612, PA12, Polyester PBT, Polymex, Mylex LDPE, PPN, Bionifil.

Key Personnel

Thomas Olma:
Global Head of Business Segment PC
Andrew McIlroy:
Global Head of Business
Segment TBF



Proveedora Mexicana De Monofilamentos

Oriente 217 No. 190
Agricola Oriental
08500 Mexico City
Mexico
Tel: ++52 55 5763 8663
Fax: ++52 55 5700 5769
e-mail: pmm@pmm-mex.com
Website: www.pmmbrightline.com

Products/Services

Proveedora Mexicana de Monofilamentos (PMM) is a worldwide recognized company, specializing in the production of Quality Engineered Synthetic Monofilaments for toothbrushes, interdental brushes, cosmetic brushes and brushes for industrial applications. The experience acquired during more than 45 years of operation, enables us to fulfill our customer's requirements by offering: personalized service, small lot sizes and one of the shortest lead times in the industry.

The quality of our products and processes, supported by our ISO9001 and ISO14001 certifications, along with the knowledge, experience and enthusiasm of our team has led PMM to occupy an important place in the brush industry.

Key Personnel

Dennise Silva - Sales Manager
Enrique Mejia - General Manager

SYNTHETIC FILLINGS



Tai Hing Nylon Filament Products Co. Ltd.

Hong Kong Address

Shop C, On Ying Mansion, G/F
1138 Canton Road
KLN, Hong Kong

China Address

No. 88, Yunqin Road, Jianghai High Tech District,
Jiangmen, Guangdong Province,
China

Tel: ++86 0750 3777088/00852-24940233

Fax: ++86 0750 3777099/00852-24852677

e-mail: marketing@taihingnylon.com

Website: www.taihingnylon.com

Products/Services

Originated in 1985, Tai Hing Nylon Filament Products Co.,Ltd. (Tai Hing) has specialized in providing various kinds of high-quality monofilament products (4300+ product portfolio), such as PA6/66/610/612/46, PBT, PET, PE, PP, PS, PPS, PEEK, ect., applied in widely over 12 industries, and cooperated with over 36 well-known international brands and countries.

Key Personnel

Mr Wilson Lau - Director
Mr William Lau - Director
Mr Peter Pang - Sales Manager

WIRE



Frank Bürstendraht GmbH

Industriestr. 6,
58840 Plettenberg
Germany

Tel: ++49 2391 60153 0

Fax: ++49 2391 60153 20

info@buerstendraht.de

www.buerstendraht.de

TRADE ASSOCIATIONS

AMERICAN BRUSH MANUFACTURERS ASSOCIATION

P.O. Box 102, Waterville, OH 43566

Tel: +1 (419) 878-2787

info@abma.org

Website: www.abma.org

Key Personnel

Donna Frenst: ABMA Executive Director

EUROPEAN BRUSH FEDERATION-FEIBP

P.O. Box 90154, 5000 LG Tilburg

The Netherlands

Tel: ++31 13 5944 678

Fax: ++31 13 5944 749

e-mail: feibp@wispa.nl

Website: www.eurobrush.com

Join Us for the 107th Annual ABMA Convention March 19-22, 2024

Omni Amelia Island Resort • Fernandina Beach, Florida



American Brush
Manufacturers
Association

Don't miss this chance to meet with leading Manufacturers and Suppliers in the brush industry!

PROGRAM INCLUDES:

- Educational Sessions
- Pre-scheduled Face-2-Face Meetings
- Networking Functions
- Social Engagement Opportunities

ABMA Membership required to attend.

JOIN TODAY!!

For More Information
visit
ABMA.org



Also make plans to attend the **World Brush Expo**
THE Industry Show for and by the Brush Industry!
May 22-24, 2024 • Bologna, Italy
Get more info at worldbrushexpo.com



PERLON®

The Filament Company

BRUSH UP YOUR PRODUCT

- ≡ Special range of functional filaments for „high volume“ and easy release.
- ≡ Availability of “One- to Three Component-Filaments”.
- ≡ Soft Filaments because of the use of TPEE skin or cellular structure.
- ≡ 100% Biobased Filaments based in different shapes and configurations. FDA compliant.
- ≡ Post Consumer Recycled PBT – FDA compliant.

perlon.com